

Main menu



Application menu
Open, save, close...



Search bar
Direct access to plugins
& functionalities



Preferences
Set max memory, check
plugins' version...



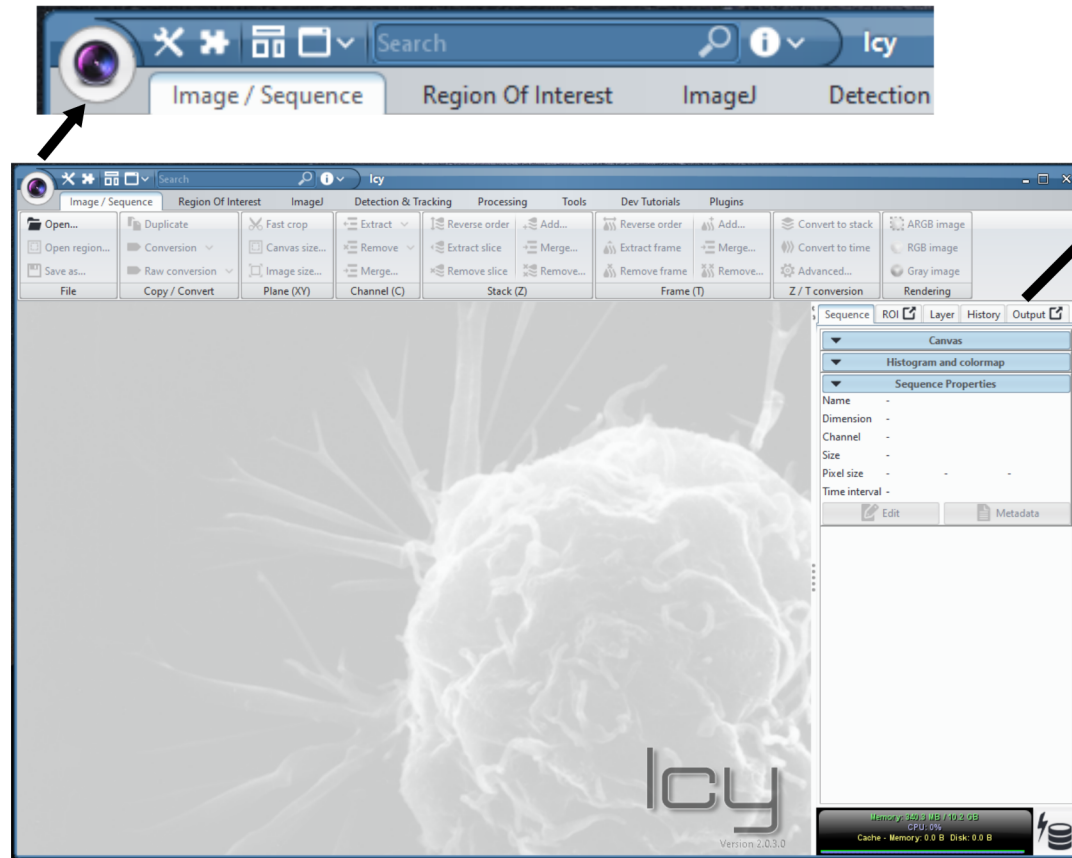
Plugin management
Browse, install, update,
remove plugin



Multi-window mode
Detach panes from
each other



Window management
GUI appearance,
rearrange opened windows



Side panel

Sequence

To adjust contrast/brightness, select channels, change LUTs, check metadata

ROI

Display/Edit all ROIs in the sequence, get ROI measurements

Layer

Display/Hide layer(s), modify the scale bar

History

Modifications applied on an image

Output

Icy version, and computer specifications, information relative to updates, and error messages

Tips to gain space

- Use the multi-window mode
- Hide the side panel: **double-click on the background image**
- Hide the ribbon menu: **double-click on a tab title**

Shortcuts to rearrange windows

- Shift + G**: grid
- Shift + H**: horizontal
- Shift + V**: vertical

Icy version number



For material & methods or when reporting bugs.

Plugin version number

Go to the Preferences menu,
then Plugin -> Local plugin
For material & methods or when reporting bugs.

Memory usage



Virtual mode

Allow streaming data from hard disk for large timelapses and/or 3D stacks.



Memory and usage cache

Memory used versus memory available (for Icy), %CPU usage and amount of memory and disk space used for cache. Image cache allows to process large 3D ou timelapse dataset which doesn't fit in memory.